



# OFFSHORE TRANSPORT AND ENGINEERING LLP

## MARINE CONSULTANCY SERVICES

REV 0.6



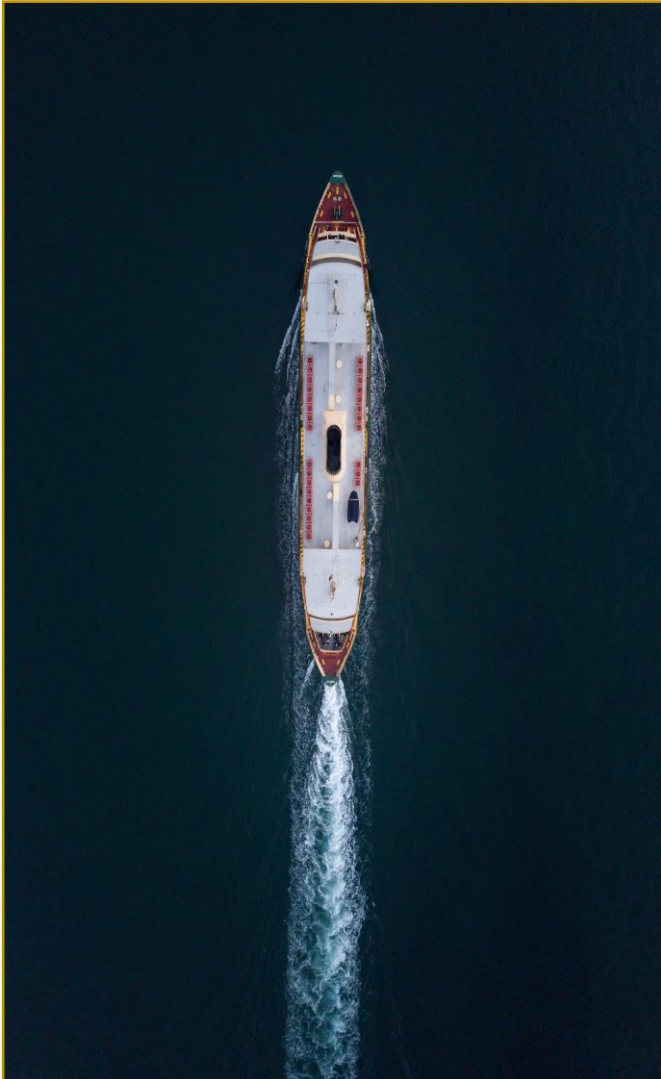
## Our Vision

To be recognized by our clients for our experience, market leadership, quality of delivery and to be the preferred company for talented professionals.

**OTE** is a company that offers marine, engineering and consultancy services to the Maritime, oil, gas, marine construction and power sectors along with providing real time market-leading advice and de-risking operations whilst promoting maritime commerce.

**OTE** also unites leading marine, engineering and adjusting consulting companies in their common commitment to drive energy transition across the marine and energy industries.

Headquartered in Mumbai, the company has an international network in marine and offshore energy hubs.



Our approach can be tailored to precisely match your needs and typically includes:



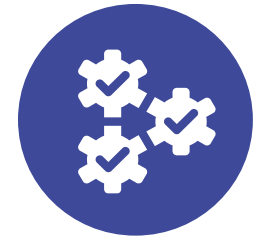
Enquiry



Responsive advice



24/365 availability to  
give real-time support



Integrated with client/  
Partner company policies



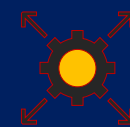
### Localization, Complete teams and individual services

- OTE** can provide complete teams to take on full projects, but our experts can also be hired individually
- Our core team works closely with a network of seasoned professionals, allowing us to deliver tailor-made solutions



### Cost-effective

- OTE** work with competitive lump sum fees or individual rates, compliant with client requirements.



### Business opportunities

- Thanks to the extensive network of **OTE**, we can also introduce you to business opportunities and provide tendering support.



OTE's core business is to assist companies with specialized knowledge and expertise, primarily w.r.t marine and transport projects

We understand needs of our clients and provide "Solution based services". We offer Consultancy services to enable our clients and partners to understand business atmospherics on ground and hence create ease of doing business

We work as a partner with our clients, applying our deep domain understanding and circumstantial knowledge to execute the assignments



## Our Services:

1. Ports and Terminals
2. Upstream and Midstream
3. Surveys, Audits and Claims
4. Marine Engineering and Naval Architecture
5. Salvage, Emergency Response and Casualty
6. Chartering and Brokerage
7. Marine vessel and cargo claims
8. Marine Representation and Port Captaincy
9. Dredging and Underwater Services / Diving

About Us

Our Approach

Services - Overview

Services - Details

Track Record



Track Record

- Multi berth cargo port (including LNG Terminal) operational clearance including National Safety in Ports Committee (NSPC) Audit - Ongoing
- Diving and underwater videography including survey for casualty jackup barge
- Project development for LNG marine infrastructure for LNG terminal including regulatory approvals
- Salvage project consultancy for major collision between tanker & bulk carrier along with various marine incidents in India and abroad
- Strategic consulting for Government Authorities (MMB, IPA, JNPT etc.) through reputed firms like KPMG, CRISIL for policy matters and transaction advisory

- Operational, HSE and commercial support services for LNG terminal in India
- Leading harbour marine authority for largest LNG project in SE Asia
- Casualty and fatality investigation and owner representation for the biggest marine casualty disaster in India
- Consortium tie-up with leading middle Eastern Dredging company – Gulf Cobla
- Advisory and feasibility study for Fleet Optimization for Dutch based Shipping Company
- Transport services for offshore installation projects

Client – Mormugao Port Trust

✂ Project type - Salvage and consultancy

☐ Chemical tanker M/T Nu-Shi Nalini

- Vessel with Naptha, ran aground on rocks during cyclone Kyarr off Mormugao Port, Goa in October 2019
- Successfully completed as Salvage Project Managers in January 2020



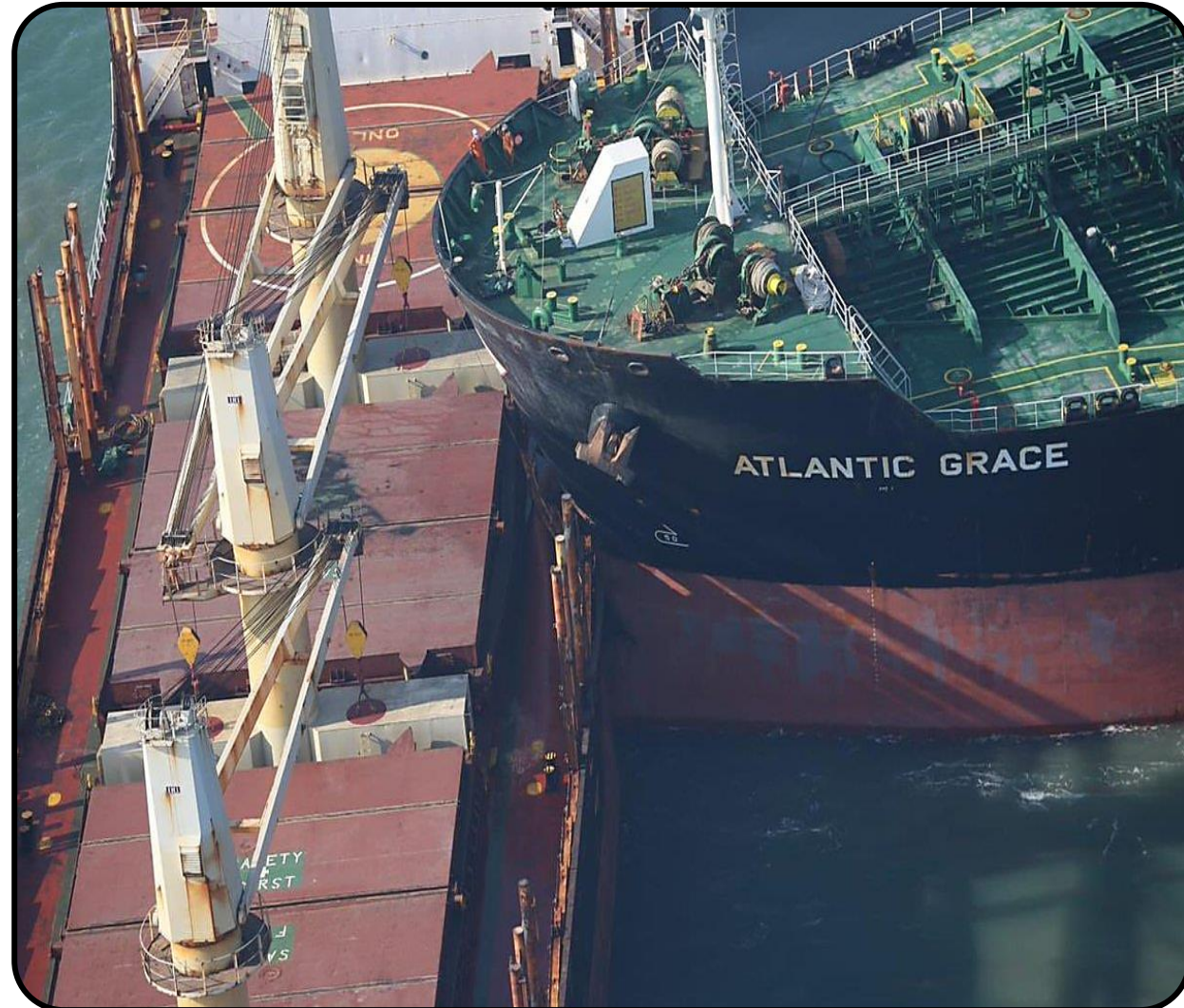
## Our Experience

Client – T&T Salvage Asia Pte. Ltd.

✂ Project type - Salvage and consultancy

☐ Chemical tanker M/T Atlantic Grace

- Vessel collided with bulk carrier M/V Aviator off Okha, Gujarat in November 2021
- Successfully completed Salvage as Project Managers in December 2021







✂ Project type – Casualty Investigation

☐ Accommodation work barge Papaa 305

- Biggest marine casualty incident in India with 80+ casualties
- Barge collided with unmanned platform in Mumbai High Offshore Area due to cyclone Tauktae in May 2021
- Successfully completed Casualty Investigation in July 2021

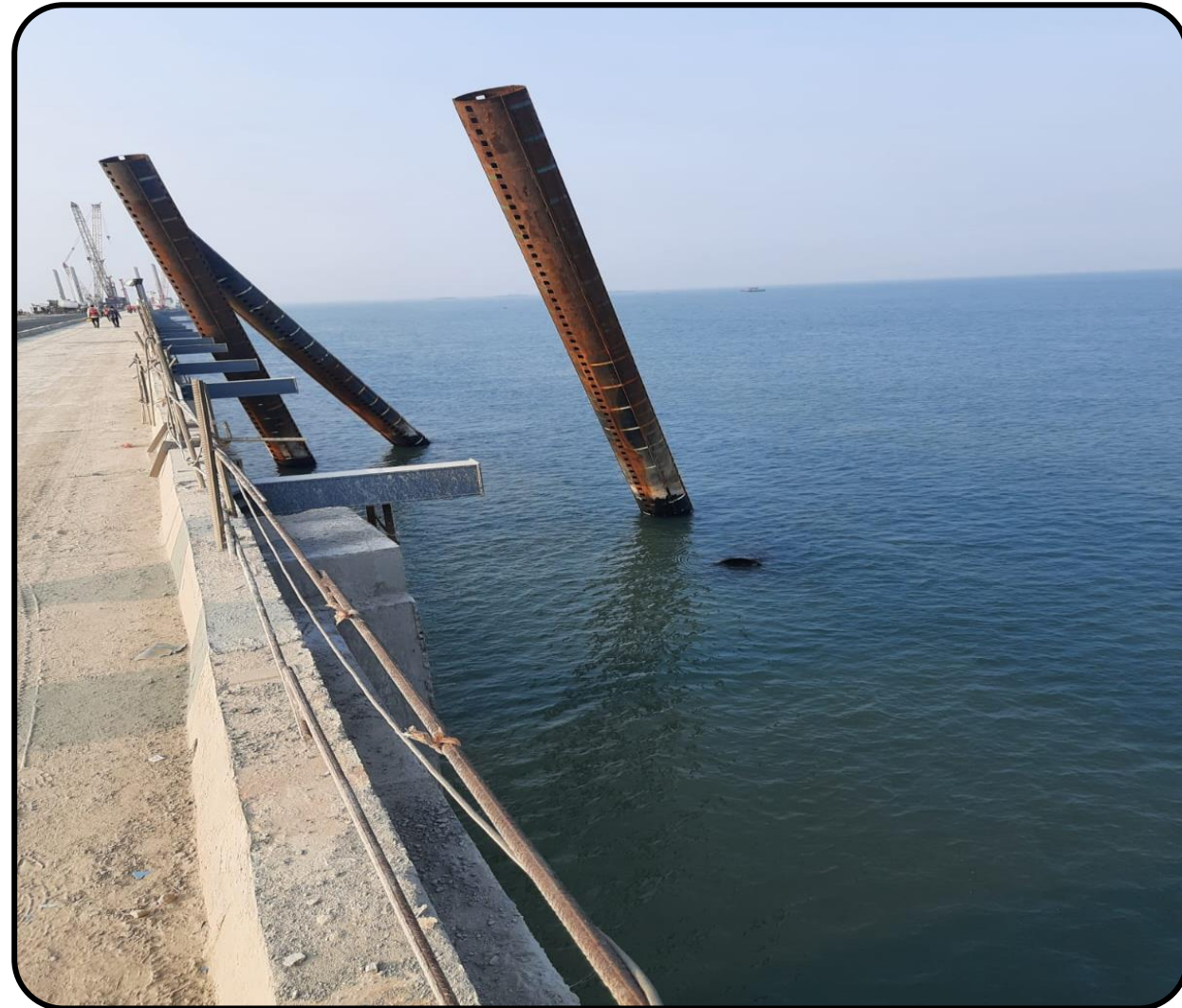
## Our Experience

Client – Afcons Infrastructure Limited (Shapoorji Pallonji Group)

✂ Project type – Underwater Diving Survey

☐ Jackup barge Raja

- Barge submerged at LNG jetty construction site in Chhara Port, Gujarat due to cyclone Tauktae in May 2021
- Awarded contract for underwater survey and videography to locate the barge equipment
- Survey completed in January 2022



## Our Experience



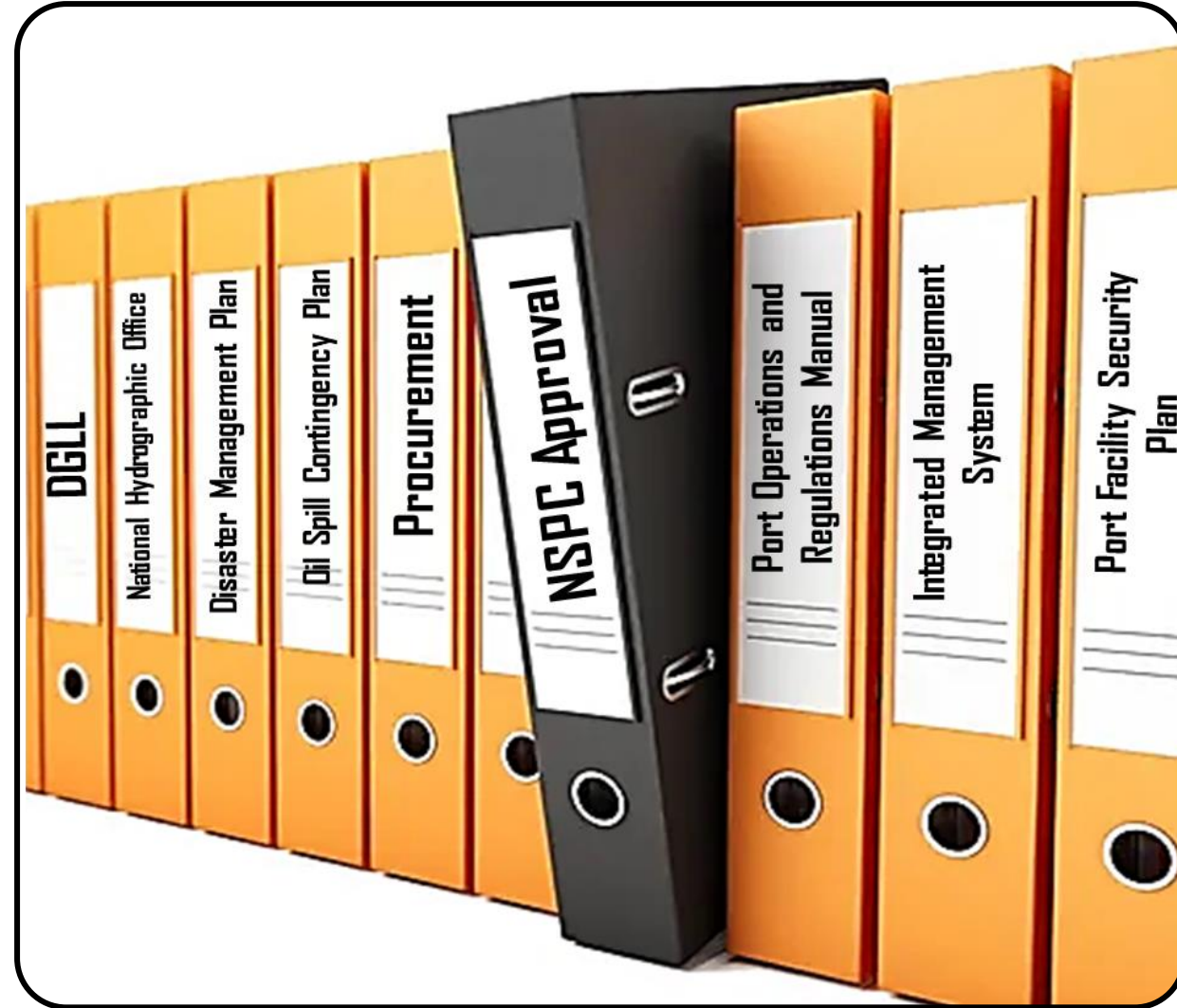
### Client – JSW Infrastructure Limited

✂ Project type – Port Consultancy Project

☐ Traffic Assessment for LNG and LPG

- Appointed as Sub-Consultant for Traffic Assessment – Tajpur Port
- Lead Consultant – CRISIL Limited
- Assessment delivered in February 2022

## Our Experience



Client – Simar Port Private Limited (Shapoorji Pallonji Group)

✂ Project type – Port Consultancy Project

☐ NSCP Clearance for Chhara Port – WIP\*

• Appointed as Principal Consultant for NSPC

Approval with following activities:

- Prepare ISO Manuals (Integrated Management System), Oil Spill Contingency Plan, Port Operation and Regulations Manual
- Coordinate with IRS for ISPS Compliance and Disaster Management Plan
- Coordinate with DG Shipping, Coast Guard, NHO, DGLL etc. for final NSPC Approval
- Procurement and installation for Aids to Navigation and Port Radio Control Station Equipment

\*WIP – Work in Progress



# CONTACT

## Offshore Transport and Engineering LLP

105 A wing, Raheja Plaza Building  
Off New Link Road, Shah Industrial Estate  
Andheri (W), Mumbai

[gbakshi@oteconsultants.com](mailto:gbakshi@oteconsultants.com)

[agupta@oteconsultants.com](mailto:agupta@oteconsultants.com)

+91 22 49621291

**24x7: +91 9920222232 / 33**

THANK YOU

